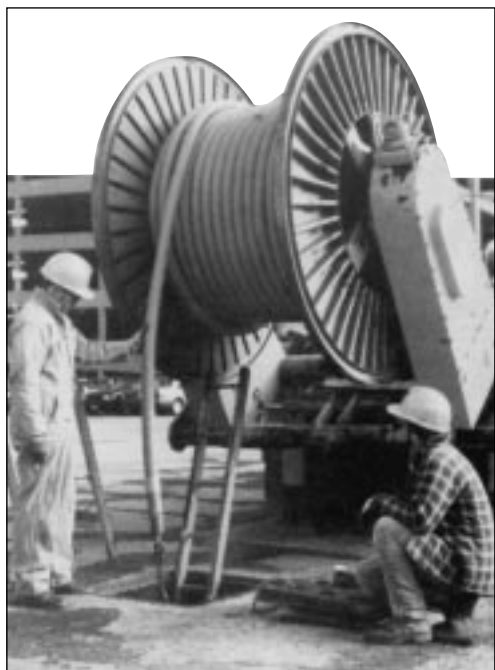


# Carlton® P&C Flex® Corrugated Flexible Conduit

Carlton® P&C Flex® nonmetallic corrugated flexible conduit is designed specifically for power and communications applications when protecting or replacing cable. Produced to IPS dimensions, Carlton P&C Flex® is grey in color and formulated for sunlight resistance.

The corrugated design of P&C Flex® provides maximum flexibility for easy handling and installation. It is perfect for a wide range of applications from underground residential communication raceway to under bridge or roadway conduit. P&C Flex® provides adaptability in the field since it may be used with existing conduits, couplings, adapters, end bells and plugs in virtually any configuration.

Carlton P&C Flex® is packaged in standard 250 foot lengths and is available through custom order in longer lengths. P&C Flex® is manufactured in sizes from 1 1/2" to 4" with a pre-installed pull tape in 1 1/2" and 2" diameter sizes.



## Dimensions

| Part No.   | Nominal Size | I.D.  | O.D.  | 100 ft. | Length  |
|------------|--------------|-------|-------|---------|---------|
| 11810      | 1 1/2"       | 1.570 | 1.900 | 20      | 250 Ft. |
| 11810T     | 1 1/2"       | 1.570 | 1.900 | 20      | 250 Ft. |
| 11811      | 2"           | 2.045 | 2.375 | 25      | 250 Ft. |
| 11811T     | 2"           | 2.045 | 2.375 | 25      | 250 Ft. |
| 11811T-700 | 2"           | 2.045 | 2.375 | 25      | 700 Ft. |
| 11812      | 2 1/2"       | 2.469 | 2.875 | 28      | 250 Ft. |
| 11813      | 3"           | 3.068 | 3.500 | 54      | 250 Ft. |
| 11815      | 4"           | 4.026 | 4.500 | 54      | 250 Ft. |

## Performance Properties

|                                 | 1 1/2" | 2"  | 2 1/2" | 3"  | 4"   |
|---------------------------------|--------|-----|--------|-----|------|
| Stiffness F/▲y at 5% deflection | 200    | 200 | 130    | 130 | 90   |
| Impact Strength (Ft./Lbs.) 72°  | 50     | 50  | 70     | 120 | 140  |
| 32°                             | 15     | 25  | 35     | 60  | 60   |
| Minimum Bending Radius (inches) | 6      | 8   | 12     | 15  | 18   |
| Conduit Tensile Strength        | 500    | 700 | 100    | 500 | 2000 |

\*Available in 15' lengths

# P&C Flex<sup>®</sup> Corrugated Flexible Conduit

## Installation Techniques

### 1. Trenching

Trench should be graded true and free from stones or soft spots. Backfill should also be free of stones and be firmly tamped around the sides of the conduit, to develop maximum supporting strength. Tamping on top of the conduit is not recommended.

### 2. Backfill

In rocky soil where it is impossible to have an even trench bottom, a selected backfill should be put in before laying the conduit. Selected backfill (not tamped) at least 6" over the top of the conduit is recommended. After final backfill is placed, tamping may be used to finish the grade.

### 3. Duct Placement

Duct may be unreeled directly into trench or along side trench and subsequently placed in trench. After placing in trench, secure one end and stretch it by hand to take up the slack. Spot backfill to hold in position. Do not use mechanical stretching equipment.

### 4. Changes in Direction

Avoid unnecessary turns, dips, or changes in direction. Keep bends as gradual as possible to assure ease of cable pull-in after duct installation.

### 5. Pneumatic Rodding

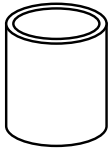
All commonly used vacuum or pressure can be used to rod P&C Flex. The line carrier (mouse, puck, rocket) should be soft, flexible material designed to fit snugly into duct without interference.

### 6. Mechanical Rodding

All commonly used mechanical rodding equipment can be used to rod P&C Flex. The tip should have a ball-type arrangement to keep rod from catching in the convolutions on the inside of duct.

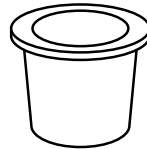
## P&C Flex<sup>®</sup> Conduit Fittings

### Couplings



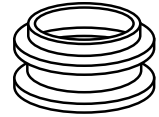
| Part No. | Size   | Pkg. Qty. |
|----------|--------|-----------|
| E940H    | 1 1/2" | 25        |
| E940J    | 2"     | 30        |
| E940K    | 2 1/2" | 20        |
| E940L    | 3"     | 25        |
| E940M    | 3 1/2" | 20        |
| E940N    | 4"     | 15        |

### Plugs



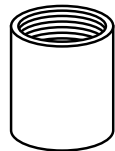
| Part No. | Size   | Pkg. Qty. |
|----------|--------|-----------|
| P258H    | 1 1/2" | 50        |
| P258JT   | 2"     | 60        |
| P258K    | 2 1/2" | 25        |
| P258LT   | 3"     | 30        |
| P258NT   | 4"     | 48        |

### Bell Ends



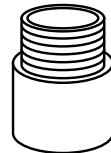
| Part No.  | Size   | Pkg. Qty. |
|-----------|--------|-----------|
| E997H     | 1 1/2" | 30        |
| E997J-CAR | 2"     | 40        |
| E997L-CAR | 3"     | 10        |
| E997M     | 3 1/2" | 40        |
| E997N     | 4"     | 30        |

### Female Adapters



| Part No. | Size   | Pkg. Qty. |
|----------|--------|-----------|
| E942H    | 1 1/2" | 25        |
| E942J    | 2"     | 30        |
| E942K    | 2 1/2" | 20        |
| E942L    | 3"     | 25        |
| E942M    | 3 1/2" | 20        |
| E942N    | 4"     | 15        |

### Terminal Adapters



| Part No. | Size   | Pkg. Qty. |
|----------|--------|-----------|
| E943H    | 1 1/2" | 25        |
| E943J    | 2"     | 50        |
| E943K    | 2 1/2" | 25        |
| E943L    | 3"     | 45        |
| E943M    | 3 1/2" | 30        |
| E943N    | 4"     | 20        |

### Cement



| Part No. | Size            | Pkg. Qty. |
|----------|-----------------|-----------|
| VC9923   | Pint—Dauber Top | 24        |
| VC9922   | Quart—Brush Top | 12        |
| VC9941P  | Gallon          | 12        |

**Carlton<sup>®</sup>**  
LAMSON & SESSIONS

In USA, contact:

25701 Science Park Drive ■ Cleveland, Ohio 44122  
1-800-3-CARLON (1-800-322-7566) ■ In Ohio, (216) 464-3400  
Fax: (216) 766-6444  
TDD/Hearing Impaired Access (216) 831-5918  
www.carlon.com

In Canada, contact:

P.O. Box 60 ■ 35 Killaloe Road, Unit 4  
Concord, Ontario ■ Canada L4K 1A0  
(905) 660-7993 ■ (888) 269-9902  
Fax: (905) 660-9663 ■ (888) 229-8622